

JOHNNY BEARD COMPANY

WWW.JOHNNYBEARDCOMPANY.COM

14308 E 11th St. Tulsa, OK 74108
918.694.6812
johnny@johnnybeardcompany.com



1021



1090



2009SE

JOHNNY BEARD COMPANY

America's leading manufacturer of fireplace bellows, Johnny Beard Company was established in 1975 by Johnny & Rosemary Beard. Johnny utilized his expertise in woodworking, leatherworking, and metalworking to create fireplace bellows that were both fully functional and aesthetically pleasing.

In 1979 Johnny Beard Company set up a bellows factory in Tulsa, Oklahoma. Johnny's ink drawing of this workshop can be seen on the tag of every Johnny Beard bellows. Johnny Beard Company still operates out this old workshop in Tulsa, Oklahoma.

Over the years Johnny Beard bellows have come to be recognized as superior quality fireplace products and Johnny Beard is regarded as one of the "most creative men in the fireplace industry". All Beard products are handcrafted with the utmost care. Johnny still hand signs each product which serves as a mark of excellence. Johnny Beard products are now sold all over the world and have been featured in many noted industry publications as well as on HGTV.





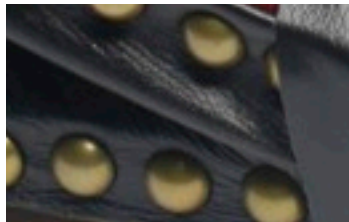
A *gift* to be
treasured for
generations.

Bringing
warmth
&
charm
to homes
around
the world...

Johnny Beard bellows are all hand-signed by Johnny Beard and feature...



QUALITY WOODS



**EXCELLENT SMOOTH & SUEDE
LEATHER**

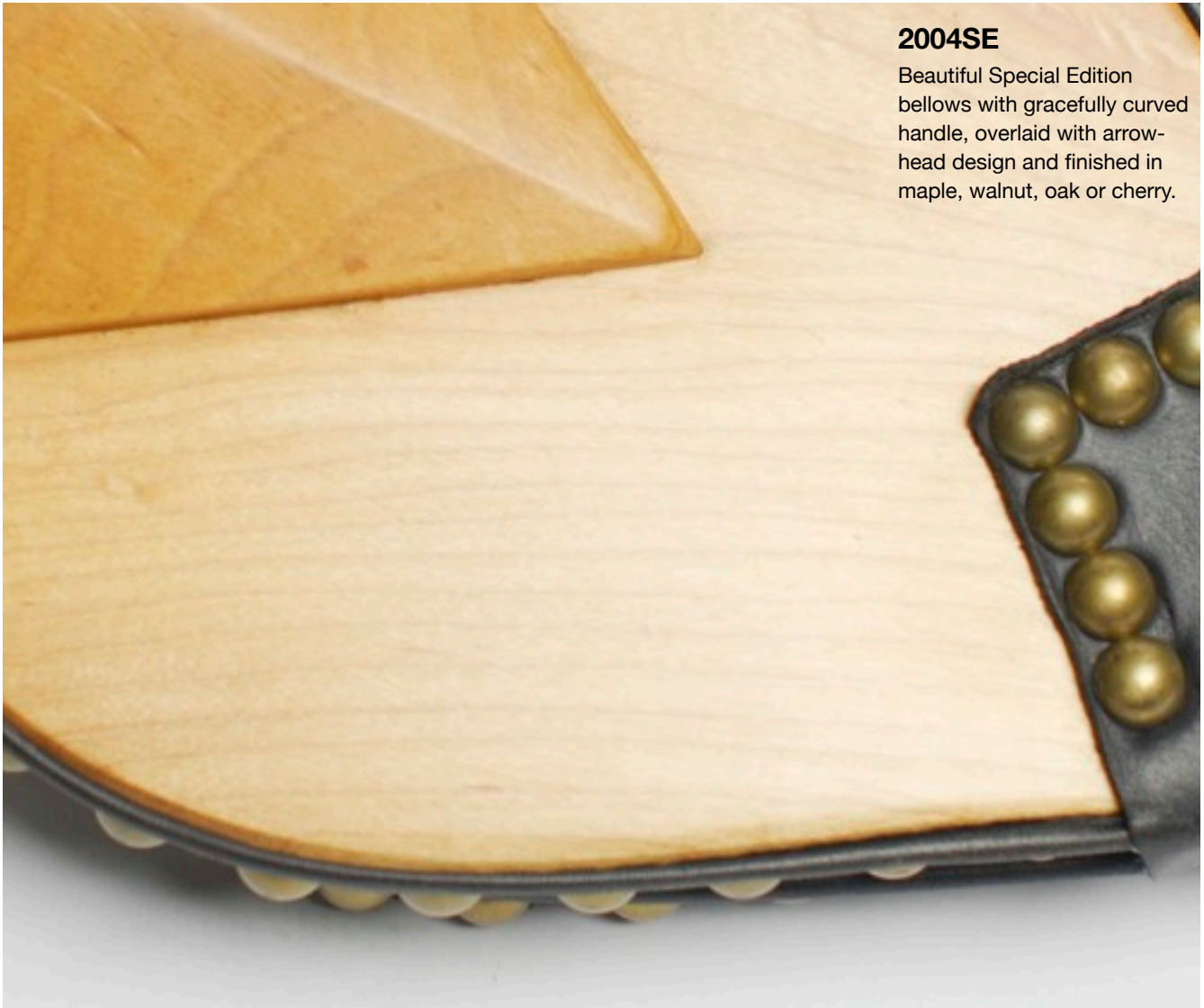


BRASS NAILS & NOZZLES

JOHNNY BEARD *Special Editions*

2004SE

Beautiful Special Edition bellows with gracefully curved handle, overlaid with arrow-head design and finished in maple, walnut, oak or cherry.



2008SE

Exquisite Special Edition bellows with raised turtle back and leather cover, hand-carved in stylized egg and dart pattern.



JOHNNY BEARD *Special Editions*



2005SE

Exotic reptile print leather
with gracefully sculpted
handle made in quality oak.



JOHNNY BEARD *Special Editions*



2010SE

Elegant Special Edition bellows features exotic alligator print leather over raised turtle back.



2011SE

Also available in lizard print leather.



JOHNNY BEARD *Special Editions*

2014SE

Stunning Special Edition bellows features beautifully figured tiger maple with a raised turtle back.



JOHNNY BEARD *Special Editions*



2004SE

Gracefully curved, overlaid handle, finished in maple, walnut, oak or cherry.
(p. 4)



2005SE

Exotic reptile print leather with gracefully curved oak handle.
(p.6)



2008SE

Leather cover hand-carved in classic egg and dart pattern, with raised turtle back.
(p.5)



2009SE

Leather covered top with intricate sawtooth lacing.
(p.7)



2010SE, 2011SE

2010SE features exotic alligator print leather over raised turtle back. 2011SE features exotic lizard print.
(p.8)



2014SE

Beautifully figured tiger maple with raised turtle back.
(p.9)

All *Special Edition* Bellows include head to head nails and special hand-stamped nozzles. Each bellows features only the finest woods & leather and is hand-signed by Johnny Beard.

“A thing
of beauty
is a joy
forever...”

-John Keats

JOHNNY BEARD COMPANY



ROUND BACK

Solid pine bellows with sculpted raised back, dark hand-waxed finish and genuine suede leather.

Model# 1060



JOHNNY BEARD COMPANY



ANTIQUE PINE

Rustic pine, genuine suede finished leather. Decorative nails and hand formed brass nozzle.

Model# 1010



ROSETTE

Piy opher hawers, eit yaggles orn ti sumbloat alohe plok. Su havo loasor cakso tgu pwuructs tyu InfuBwain.

Model# 1021



ZEPHYR

Profiled edge on handle, genuine suede finished leather. Decorative nails and hand formed brass nozzle.

Model# 1030



SMALL OAK

Dark or natural solid oak, genuine suede finished leather. Decorative nails and hand formed brass nozzle.

Nam# 1040



COPPIN

Dark or natural solid oak, copper trim, genuine suede finished leather. Decorative nails and hand formed copper nozzle.

Model# 1050



ROUND BACK

Solid pine with sculpted raised back, dark hand-waxed finish, genuine suede finished leather.

Model# 1060



SMALL TWIN VALVE

Double air intake valves, available in walnut, cherry, maple, natural or dark oak, fine full grain leather.

Model# 1070



SMALL TWIN VALVE LONG HANDLE

Long handle for extended reach, double air intake valves, walnut, cherry, maple, natural or dark oak fine full grain leather.

Model# 1071



LARGE TWIN VALVE

Large bellows good for larger fireplaces, available in walnut, cherry, maple, natural or dark oak, fine full grain leather.

Model# 1080

JOHNNY BEARD COMPANY



QUEEN ANNE

Carved shell motif, available in walnut, cherry and maple finish, full grain leather.

Model# 1090



PENNSYLVANIA PINE

Inspired by Pennsylvania Dutch folk art, traditional heart-shaped air intake valve.

Model# 1100



LONG JOHN

Solid eastern pine, extra long handle for extended reach, dark hand-waxed finish.

Model# 1110



ENGLISH OAK

Traditional English pattern, available in natural or dark oak, solid oak, fine full grain leather.

Model# 1120



JAMESTOWN

Raised back, double air valves, available in walnut, maple, cherry, natural or dark oak, fine full grain leather.

Model# 1130



ALEXANDRA

Classical carved motif on face, available in walnut, maple, cherry, natural or dark oak, fine full grain leather.

Model# 1134



PATRIOT

Natural oak, contemporary asymmetrical design, fine full grain leather. Decorative nails and hand formed brass nozzle.

Model# 1140



ALYSSA

Carved shell motif on raised back, double air valves, available in walnut, cherry, maple, natural or dark oak, fine full grain leather.

Model# 1131

Wood Finishes

